



SYNOPSIS GROUP

Introduction to JanusSeal for Outlook

Date Created: 27th November 2019

Version Control:

Version	Description of Changes	Date	Author(s)
Draft	Creation of document	27/11/2019	Nardus Schroeder

Contents

Version Control:	2
Introduction to JanusSeal for Outlook	4
Take Control of Your Information Security.....	5
Quick to set up and deploy.....	5
Intuitive and easy to use.....	5
Flexible and adaptable.....	6
Designed to enhance existing systems.....	6

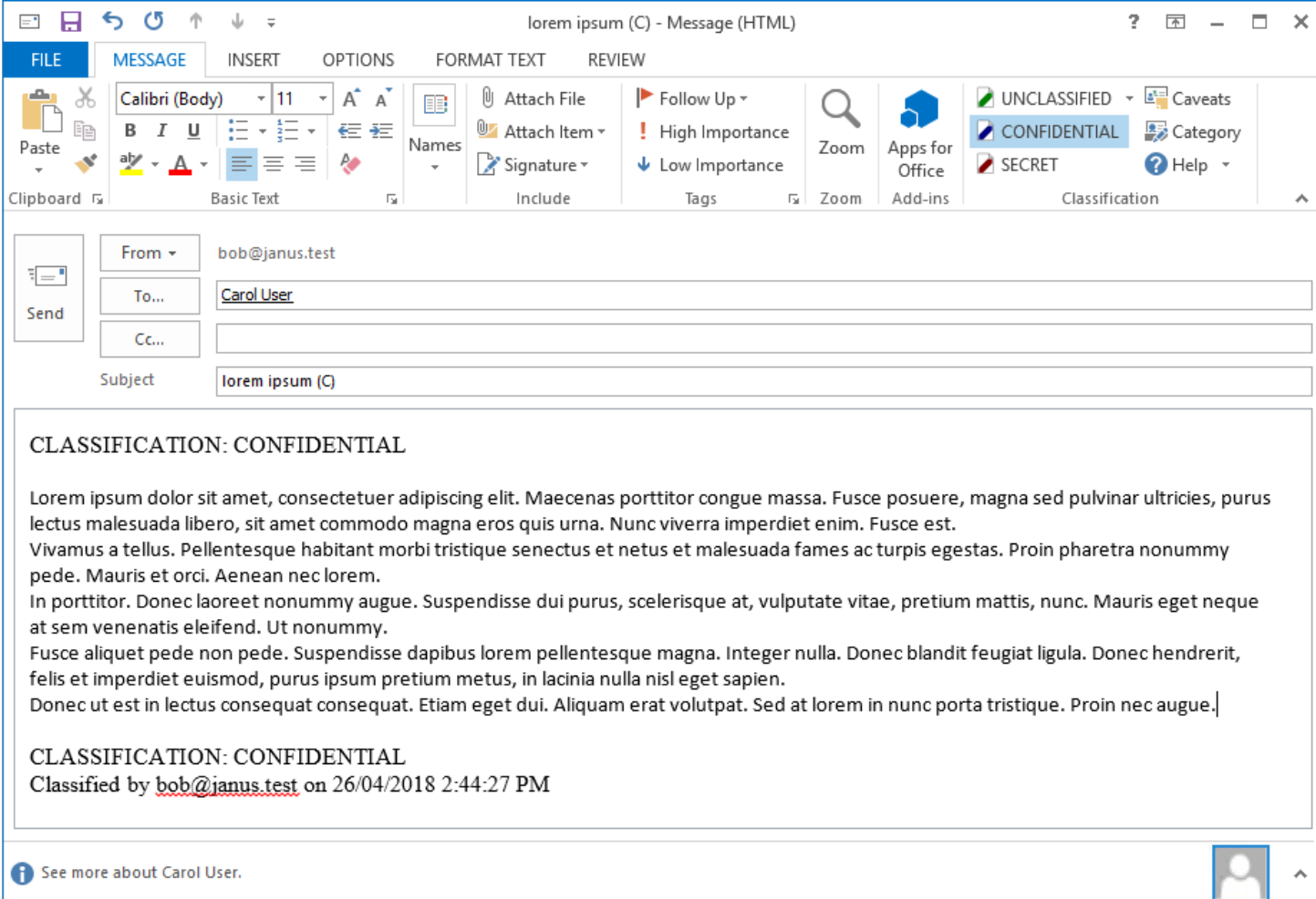
Introduction to JanusSeal for Outlook

Janusseal for Outlook makes it simple for users to assign a security classification to every email they send. In just a few seconds, sensitive information is effectively classified, reducing the risk of it being lost or mishandled.

People are prompted to classify their email based on information sensitivity

- Visible classification labels alert recipients to the sensitivity level of the information they receive
- Classification can be embedded in metadata labels, enabling the existing security system to control access and distribution of sensitive information
- Multi-level classification and simple configuration create a practical, flexible solution
- The mandatory process ensures sensitive information is always classified

By making people aware of sensitive information, Janusseal for Outlook dramatically reduces the risk of emails being misdirected or mishandled.



The screenshot shows an Outlook window titled "lorem ipsum (C) - Message (HTML)". The ribbon includes FILE, MESSAGE, INSERT, OPTIONS, FORMAT TEXT, and REVIEW. The MESSAGE ribbon is active, showing options like Paste, Basic Text, Attach File, Attach Item, Signature, Follow Up, High Importance, Low Importance, Zoom, and Apps for Office. The Classification section on the right shows a dropdown menu with "UNCLASSIFIED", "CONFIDENTIAL" (selected), and "SECRET". Below the ribbon, the email header shows "From: bob@janus.test", "To: Carol User", and "Subject: lorem ipsum (C)". The main body of the email contains the text "CLASSIFICATION: CONFIDENTIAL" followed by several paragraphs of Lorem Ipsum text. At the bottom of the email body, it says "CLASSIFICATION: CONFIDENTIAL" and "Classified by bob@janus.test on 26/04/2018 2:44:27 PM". A small profile picture of Carol User is visible in the bottom right corner.

Take Control of Your Information Security

Classification is the easiest way to distinguish between sensitive and public information – a distinction that everyone in your organisation can make in the emails and documents they create. By identifying and marking sensitive information within your unstructured data, it's simpler for this material to be protected, managed and controlled accordingly.

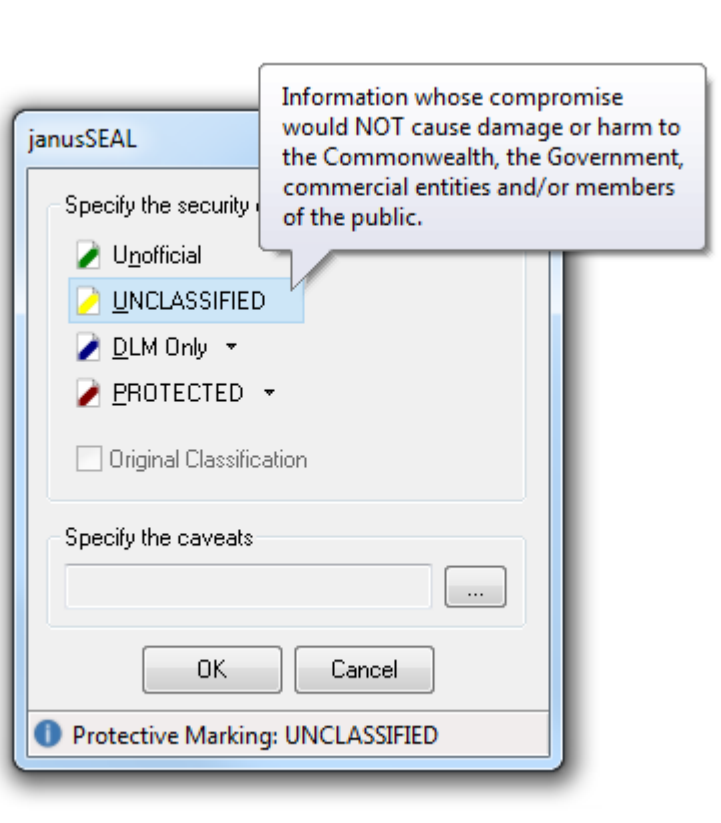
By empowering every member of your team with the tools to classify sensitive information, Janusseal for Outlook fosters a security-conscious culture, improves compliance, and provides added peace of mind that sensitive data won't be accidentally lost or mishandled.

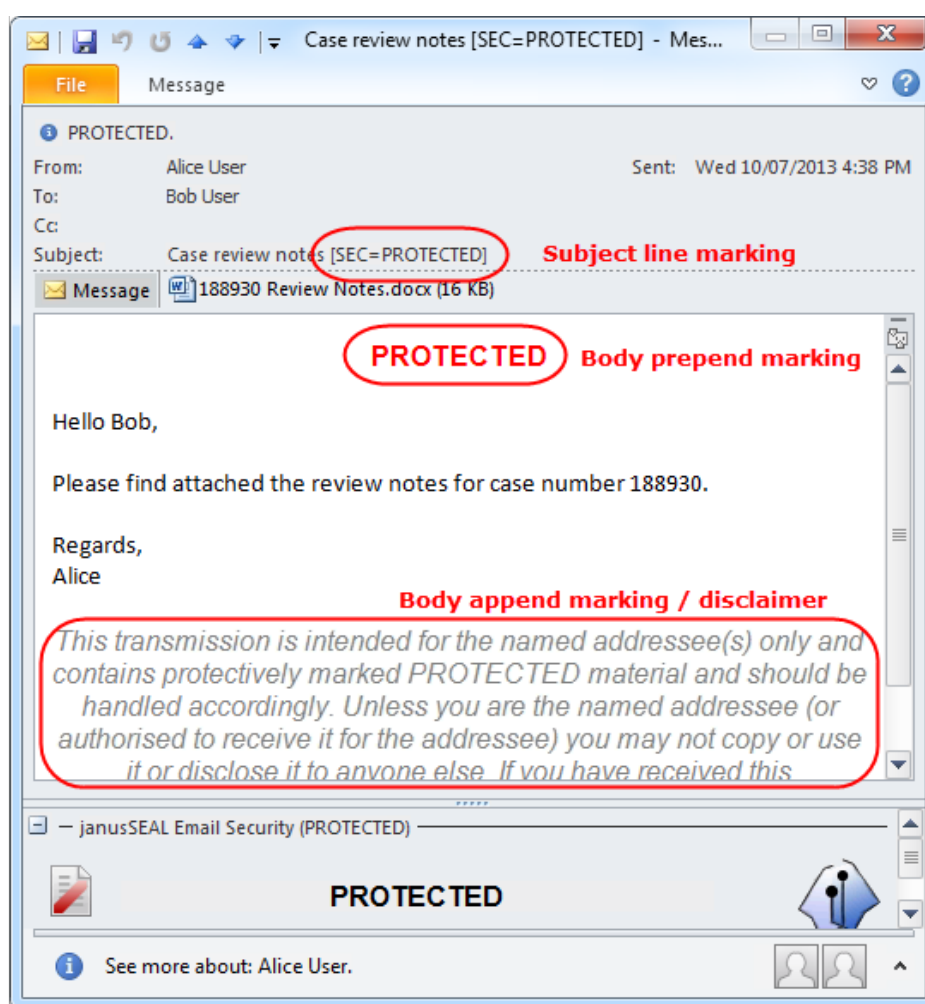
Quick to set up and deploy

A simple add-on to Microsoft Outlook, Janusseal for Outlook is a scalable solution that easily integrates with email gateways and is centrally deployed via Microsoft Group Policy.

Intuitive and easy to use

For each email they create, people simply select a security classification from a list of your chosen labels, dependent on their authority and clearance level.





Flexible and adaptable

The adaptable solution can be easily configured to suit your organisation's requirements, ranging from general commercial use to military-grade classification.

Designed to enhance existing systems

Offering seamless integration with your existing IT security system, Janusseal for Outlook optimises performance of current solutions, maximises ROI and reduces costs by avoiding the need for new infrastructure.

"We are impressed with the engineering of Janusseal. The add-in is very robust, and the configuration via GPO is both flexible and convenient. If there are changes, we don't have to repackage and redeploy the client – I wish all our applications could be configured this way!"

Janusseal Customer quoted March 2017